

TEKNIK COLLECTION



*filtrante shading*

**SOLTIS 92 | PERFORM**

 **RESSTENDE®**

# SOLTIS 92 PERFORM



38268

### Un vero e proprio scudo termico

Grazie alle sue micro-aerazioni, Soltis 92 Perform:

- filtra il calore;
- limita l'effetto serra, permettendo così di ridurre:
  - l'utilizzo dell'aria condizionata;
  - le spese energetiche dell'edificio.

### Trasparenza senza abbagliamento

Un'ampia scelta cromatica per moltiplicare le soluzioni tecniche ed estetiche possibili:

- preservare una visibilità verso l'esterno;
- assicurare l'intimità degli occupanti.

### A real heat shield

Thanks to its micro-ventilation system, Soltis 92 Perform:

- regulates the sun's heating effects;
- limits the greenhouse effect.
- Such unrivalled performances enable to reduce:
  - the use of air-conditioning,
  - to reduced energy expenditure of the building.

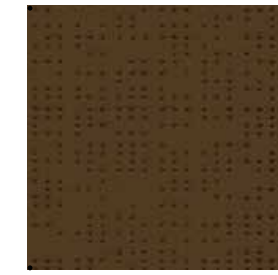
### Transparency without glare

A large choice of colours to increase technical and aesthetic solutions:

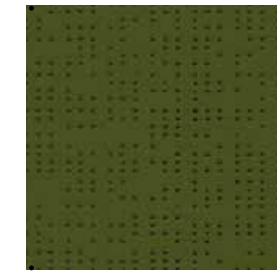
- to conserve visibility toward the outside;
- to ensure privacy for inhabitants.



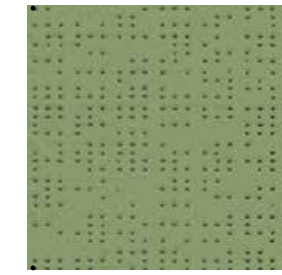
38137



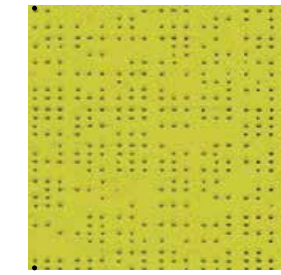
38148



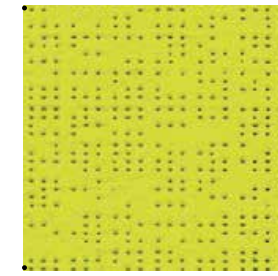
38149



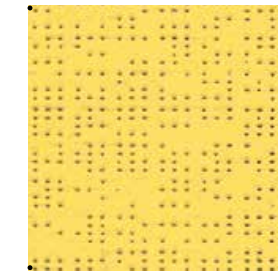
38058



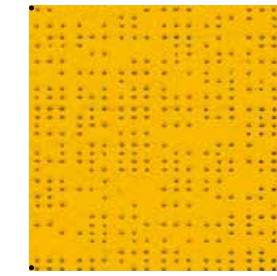
38333



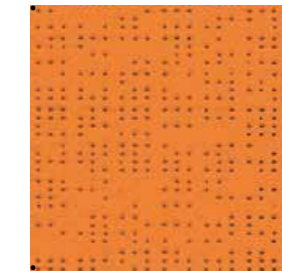
38157



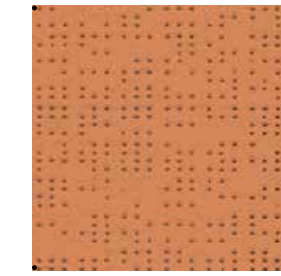
38013



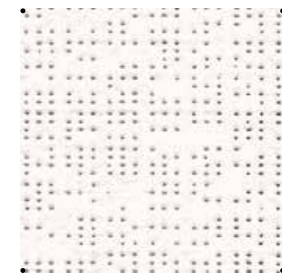
38166



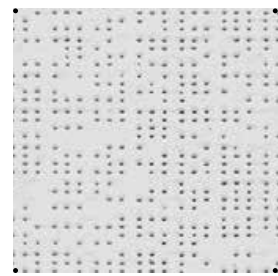
38204



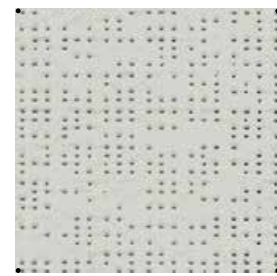
38274



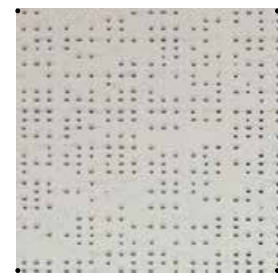
\*38044



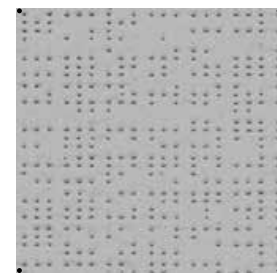
\*38272



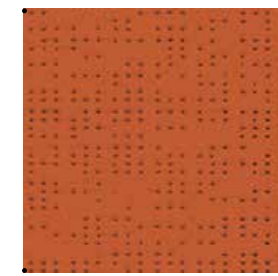
\*38171



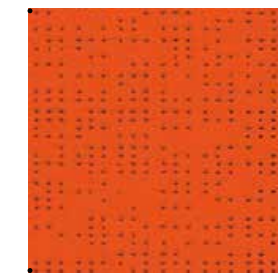
38065



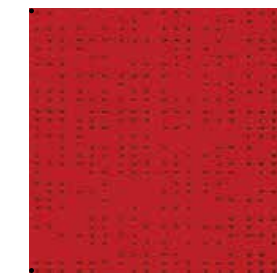
\*38048



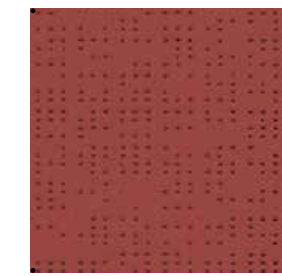
38261



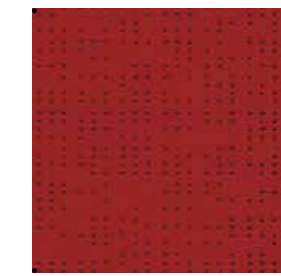
38172



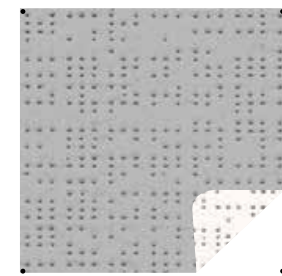
38255



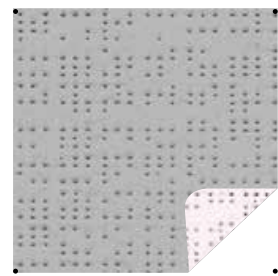
38267



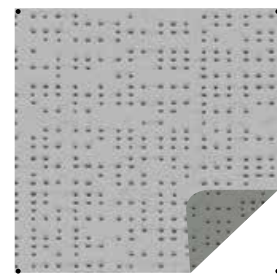
38152



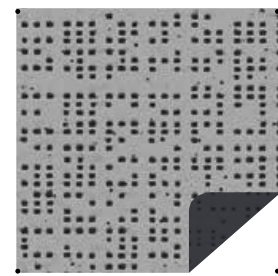
\*38051



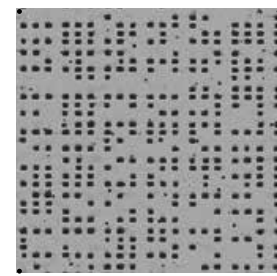
\*38046



\*38074



38068



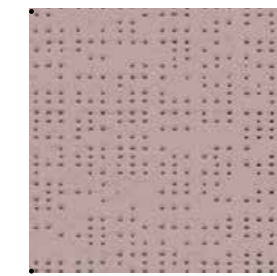
\*38045



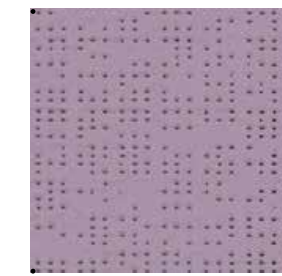
38260



38268



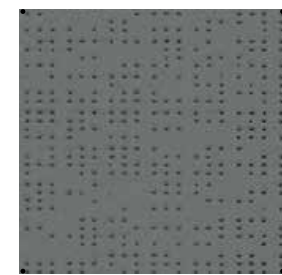
38163



38164



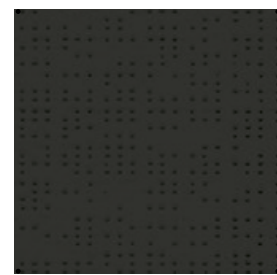
38336



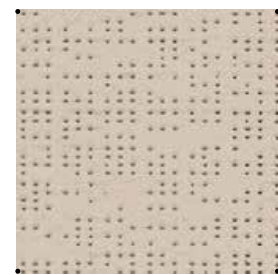
\*38167



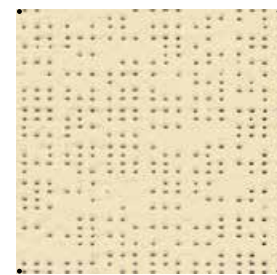
\*38047



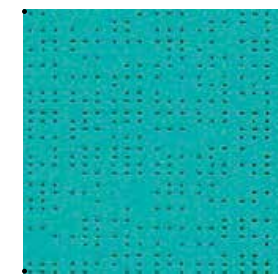
\*38053



\*38135



\*38075



38269



38271



38270



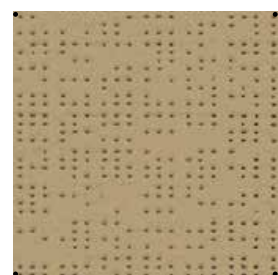
38264



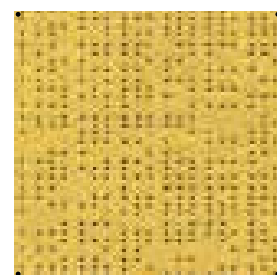
38039



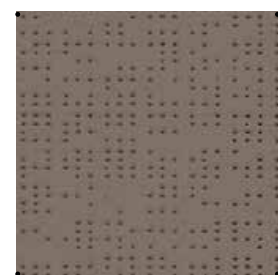
\*38265



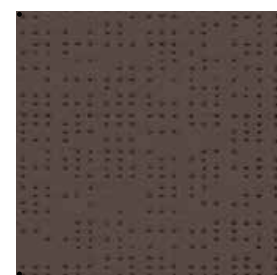
\*38012



38273



38266



\*38043



38160



38161

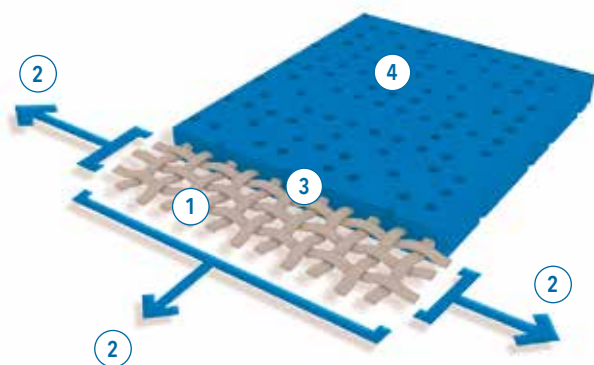


38342

COLORI COORDINATI  
CON SOLTIS B92-N  
MATCHING COLOURS  
WITH SOLTIS B92-N



**TECNOLOGIA ESCLUSIVA EXCLUSIVE TECHNOLOGY**



- 1 **Struttura in micro-cavi di poliestere ad alta tenacità**  
*High-tenacity polyester micro-yarn base cloth*  
» **Resistenza superiore all'allungamento e allo strappo**  
*Superior elongation and tear resistance*

---

- 2 **Rivestimento sotto tensione biassiale esercitata in trama e ordito**  
*A coating with fabrics under bi-axial constant tension in both warp and weft directions*  
» **Nessuna deformazione durante l'installazione e l'utilizzo**  
*No deformation during processing and use*

---

- 3 **Rivestimento superiore sulla cresta dei fili e trattamento di superficie anti-sporcizia**  
*Greater coating at the top of the yarns and a dirt resistant surface treatment*  
» **Longevità estetica e meccanica superiore**  
*Superior aesthetic and mechanical durability*

---

- 4 **Planarità estrema e debole spessore**  
*Exceptional flatness and thinness*  
» **Superficie liscia facile da pulire, ingombro ridotto, avvolgimento semplificato**  
*Smooth finish easy to clean, space saving, easy rolling*

<b>Composizione</b> <i>Composition</i>	Poliestere spalmato PVC <i>Polyester PVC coated</i>
<b>Altezza tessuto</b> <i>Width</i>	177 - 267 cm* (*Questa tinta è disponibile anche in altezza 267 cm) <i>177 - 267 cm* (*This colour is available also in width 267 cm)</i>
<b>Spessore</b> <i>Thickness</i>	0,45 mm <i>0.45 mm</i>
<b>Peso</b> <i>Weight</i>	420 g/m <sup>2</sup>
<b>Fattore di apertura</b> <i>Openess factor</i>	4%
<b>Resistenza alla trazione</b> <i>Breaking strength</i>	ordito 310 daN/5 cm, trama 210 daN/5 cm <i>warp 310 daN/5 cm, weft 210 daN/5 cm</i>
<b>Resistenza allo strappo</b> <i>Tear strength</i>	ordito 45 daN, trama 20 daN <i>warp 45 daN, weft 20 daN</i>
<b>Tossicità</b> <i>Toxicity</i>	nulla <i>non-toxic</i>
<b>Classe di reazione al fuoco</b> <i>Fire retardant class</i>	C1 (IT) - M1 (F) - B1 (D) - B-s2,d0 (EU)
<b>Manutenzione</b> <i>Maintenance</i>	immersione in acqua fredda e detergente neutro <i>dip in cold water and use neutral detergent</i>

**SOLTIS 92 | PERFORM**

-  **ignifugo**  
*fire retardant*
-  **filtrante**  
*shading*
-  **per uso interno**  
*for indoors*
-  **per uso esterno**  
*for outdoors*
-  **senza guida o fuori guida**  
*freehanging or fabric unguided*
-  **guidato rivettato**  
*fabric guided with plastic press-studs*
-  **guidato steccato**  
*fabric guided with reinforcement rods*
-  **telo con zip laterale**  
*fabric guided with welded zip*
-  **giuntato**  
*fabric with welded seams*



Fra ordini diversi non può essere garantita una costante omogeneità di colore nei tessuti, essendo inevitabile riscontrare variazioni di tonalità tra i diversi lotti di produzione. I dati presenti in questo documento sono da considerarsi a scopo informativo e non possono essere considerati come vincolanti.  
*The colour of the fabric may vary from order to order, as the variation of tone is intrinsic to both production processes. The data in this document is for information only and may not be considered as binding.*

# PROPRIETÀ SOLARI E LUCE % SOLAR ENERGETIC PROPERTIES %

Cod.	Ts	Rs	As	gtot EXTERNAL blind				gtot INTERNAL blind			
				gv=0.59	class	gv=0.32	class	gv=0.59	class	gv=0.32	class
*38044	19	68	13	0,14	3	0,07	4	0,35	1	0,11	3
*38272	12	55	33	0,11	3	0,05	4	0,39	1	0,16	2
*38171	8	41	51	0,10	3	0,04	4	0,43	1	0,20	2
38065	10	46	44	0,11	3	0,05	4	0,42	1	0,19	2
*38048	8	46	46	0,09	4	0,04	4	0,42	1	0,18	2
*38051 A/B	12/12	49/70	39/18	0,11/0,10	3/3	0,06/0,05	4/4	0,41/0,34	1/2	0,17/0,10	2/3
*38046 A/B	12/12	46/63	42/25	0,12/0,10	3/3	0,05/0,05	4/4	0,42/0,37	1/1	0,18/0,14	2/3
*38074 A/B	4/4	37/25	59/71	0,08/0,09	4/4	0,04/0,03	4/4	0,45/0,49	1/1	0,21/0,24	2/2
38068 A/B	4/4	34/8	62/88	0,08/0,10	4/3	0,03/0,04	4/4	0,46/0,54	1/0	0,22/0,28	2/2
*38045	4	35	61	0,08	4	0,03	4	0,45	1	0,22	2
*38167	6	19	75	0,11	3	0,04	4	0,51	0	0,26	2
*38047	5	8	87	0,11	3	0,04	4	0,54	0	0,28	2
*38053	3	6	91	0,10	3	0,04	4	0,55	0	0,29	2
*38135	11	46	43	0,11	3	0,04	4	0,42	1	0,19	2
*38075	19	65	16	0,14	3	0,07	4	0,36	1	0,14	3
*38265	9	49	42	0,10	3	0,04	4	0,41	1	0,18	2
*38012	7	30	63	0,10	3	0,04	4	0,47	1	0,24	2
38273	8	42	50	0,10	3	0,04	4	0,43	1	0,21	2
38266	4	19	77	0,09	4	0,03	4	0,51	0	0,26	2
*38043	4	13	83	0,10	3	0,04	4	0,53	0	0,28	2
38137	3	8	89	0,10	3	0,04	4	0,54	0	0,29	2
38148	3	14	83	0,09	4	0,04	4	0,52	0	0,27	2
38149	5	16	79	0,10	3	0,04	4	0,52	0	0,27	2
38058	7	28	65	0,10	3	0,03	4	0,48	1	0,24	2
38333	11	37	52	0,12	3	0,05	4	0,45	1	0,23	2
38157	15	51	34	0,13	3	0,05	4	0,40	1	0,20	2
38013	18	57	25	0,14	3	0,07	4	0,39	1	0,17	2
38166	21	54	25	0,16	2	0,07	4	0,40	1	0,19	2
38204	21	45	34	0,17	2	0,07	4	0,43	1	0,23	2
38274	8	35	57	0,10	3	0,04	4	0,46	1	0,24	2
38261	15	40	45	0,14	3	0,04	4	0,44	1	0,25	2
38172	19	43	38	0,16	2	0,06	4	0,43	1	0,24	2
38255	12	28	60	0,13	3	0,05	4	0,48	1	0,27	2
38267	6	27	67	0,10	3	0,04	4	0,48	1	0,26	2
38152	16	35	49	0,15	2	0,05	4	0,46	1	0,26	2
38260	5	14	81	0,10	3	0,04	4	0,52	0	0,28	2
38268	16	37	47	0,15	2	0,05	4	0,45	1	0,25	2
38163	9	42	49	0,10	3	0,04	4	0,43	1	0,21	2
38164	10	45	45	0,11	3	0,04	4	0,42	1	0,21	2
38336	7	18	75	0,11	3	0,04	4	0,51	0	0,28	2
38269	9	35	56	0,11	3	0,04	4	0,45	1	0,23	2
38271	11	36	53	0,12	3	0,04	4	0,45	1	0,24	2
38270	4	18	78	0,10	3	0,04	4	0,51	0	0,27	2
38264	5	13	82	0,11	3	0,04	4	0,53	0	0,28	2
38039	4	8	88	0,10	3	0,04	4	0,54	0	0,29	2
38160	11	36	53	0,12	3	0,04	4	0,45	1	0,24	2
38161	9	21	70	0,12	3	0,04	4	0,50	0	0,27	2
38342	6	10	84	0,11	3	0,05	4	0,54	0	0,29	2

Tessuto + vetro - Fabric + glazing

## PROPRIETÀ SOLARI E LUCE % SOLAR ENERGETIC PROPERTIES %

<b>Ts</b>	Trasmissione energia solare % <i>Solar Transmittance %</i>
<b>Rs</b>	Riflessione solare % <i>Solar Reflection %</i>
<b>As</b>	Assorbimento solare % <i>Solar Absorption %</i>
<b>gtot*</b>	Fattore solare esterno <i>External solar factor</i>
<b>gtot†</b>	Fattore solare interno <i>Internal solar factor</i>
Valori di isolamento dalla luce e dal calore <i>Light and heat protection values</i>	
<b>Ts+Rs+As = 100%</b> dell'energia incidente	
<b>Ts+Rs+As = 100%</b> total energy	

## COMFORT CLASSIFICATION According to EN 14501 standard

<b>0</b>	effetto molto scarso <i>very little effect</i>
<b>1</b>	effetto scarso <i>little effect</i>
<b>2</b>	effetto moderato <i>moderate effect</i>
<b>3</b>	effetto buono <i>good effect</i>
<b>4</b>	effetto ottimale <i>very good effect</i>

**gv = 0,59:** fattore solare con vetro standard (C) basso emissivo 4/16/4, vetrocamera riempita con Argon (U valore termico di trasmittanza = 1,2 W/m²K)

**gv = 0,32:** fattore solare con vetro standard (D) riflettente basso emissivo 4/16/4, vetrocamera riempita con Argon (U valore termico di trasmittanza = 1,1 W/m²K)

Campioni testati sulla base dello standard EN 14500 che definisce le misurazioni e i metodi di calcolo come specificato nello standard EN 13363-2 "Dispositivi di protezione solare in combinazione con vetrate - Calcolo della trasmittanza solare e luminosa - Parte 2: Metodo dettagliato" e EN 410 "Vetro per edilizia - Determinazione delle caratteristiche luminose e solari delle vetrate."

**gv = 0,59:** solar factor of standard glazing (C), low-emission 4/16/4 double glazing filled with Argon (U value thermal transmittance = 1,2 W/m² K)

**gv = 0,32:** solar factor of standard glazing (D), reflecting low-emission 4/16/4 double glazing filled with Argon (U value thermal transmittance = 1,1 W/m² K)

Samples tested according to EN 14500 standard defining the measurements and calculation methods as specified in the standard EN 13363-2 "Solar protection devices combined with glazing calculation of solar and light transmittance - part 2: EN 13363-2 detailed method" and EN 410 "Glass in building - Determination of luminous and solar characteristics of glazing".



**RESSTENDE®**

Nuovi stili di vita, nuovi sistemi di tende

**Resstende S.r.l.**  
info@resstende.com  
resstende.com

