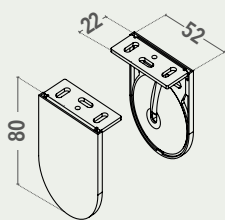
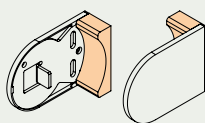


dimensioni espresse in mm
dimensions shown in mm

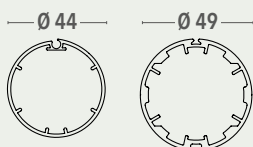
52x80



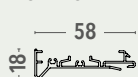
COPRIVITI
SCREW COVER PLUGS



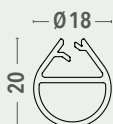
RULLO TUBE



PROFILO DI PREMONTAGGIO
ALUMINIUM FRAME



F21 - SERIE 2012



FQ20

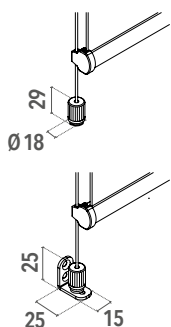


FR23



VARIANTI - OPTIONAL

- Fondale FR23 e cavo perlon Ø 3 mm o acciaio inox Ø 2,5 mm con tenditore per fissaggio piano orizzontale, con staffe in acciaio per fissaggio piano verticale, a supplemento
FR23 hem bar and Ø 3 mm perlon cable or Ø 2,5 mm stainless steel cable with cable tensioning block for window sill/floor mounting or brackets for wall mounting, on supplement



CARATTERISTICHE - CHARACTERISTICS

- Tipo di applicazione:** verticale - *Application:* vertical
- Ambiente di applicazione:** interno - *Installation:* indoor.
- Staffe di fissaggio:** 52x80 mm in ferro verniciato con copri staffe in PVC (bianco, nero, grigio) complete di copriviti. A supplemento copri staffe magnetici in alluminio satinato o verniciato bianco RAL 9003 opaco
Brackets: 52x80 mm steel powder coated brackets with PVC covers (white, grey, black) with screw cover plugs. Supplement for satin finish or matt white aluminium magnetic bracket covers
- Rullo di avvolgimento:** Ø 44 o Ø 49 mm in alluminio
Roller tube: Ø 44 or Ø 49 mm extruded aluminum tube with slot
- Fondale:** F21 Serie 2012 o quadrato FQ20 entrambi in alluminio estruso con tappi in PVC. Fondale FR23 con la variante guida cavo perlon
Hem bar: F21 Serie 2012 or squared FQ20, extruded aluminium hem bar with PVC caps. FR23 hem bar supplied with guided blind with cable
- Manovra:** a motore tubolare monofase 230V/50Hz M40, completo di fine corsa meccanico e cavo di alimentazione, protezione termica, indice di protezione agli spruzzi d'acqua IP44 Calotta lato opposto con perno rientrante
Operation: motorised operation; 230V/50Hz M40 tubular motor, with top/bottom limit switches and mains cable, thermal cut-out and class IP44 water resistance. End plug with retractable pin
- Fissaggio:** a parete o a soffitto. A supplemento profilo di premontaggio in alluminio estruso verniciato
Mounting: wall or ceiling. Supplement for powder coated premounting frame

COLORI STANDARD - STANDARD COLOURS

fondali e profilo premontaggio hem bars and premounting frame colours

	bianco Ral 9010 - white Ral 9010		grigio Ral 7016 opaco - matt grey Ral 7016
	bianco Ral 9016 opaco - matt white Ral 9016		grigio micaceo liscio - smooth micaceous grey
	avorio Ral 1013 - ivory Ral 1013		nero Ral 9005 opaco - matt black Ral 9005
	marrone Ral 8017 - brown Ral 8017		argento anodizzato - silver anodised

staffe di fissaggio brackets colours

	bianco Ral 9010 - white Ral 9010		nero Ral 9005 opaco - matt black Ral 9005
	grigio Ral 9006 - grey Ral 9006		

TESSUTI ABBINABILI - SUITABLE FABRICS

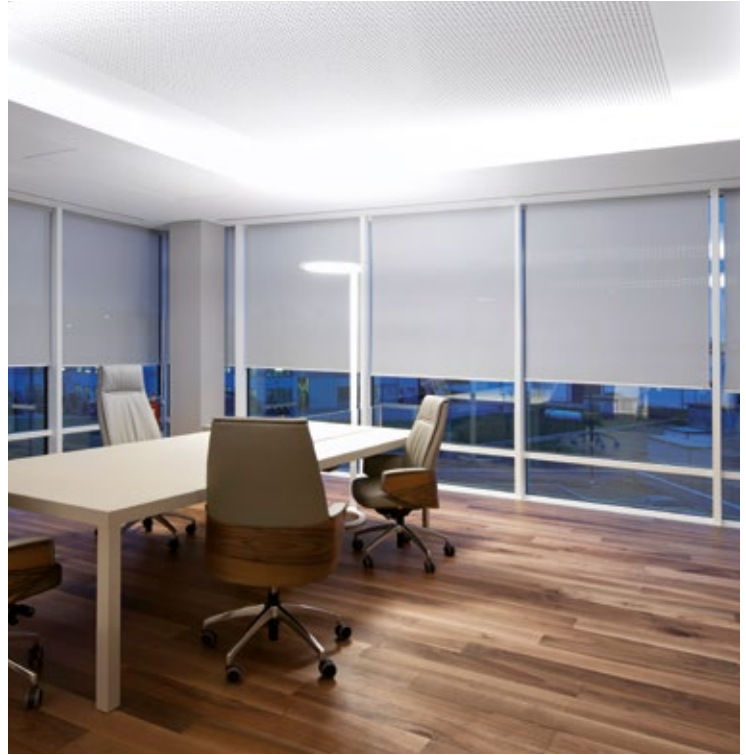
- Consultare la **TABELLA A - UTILIZZO TESSUTO** nella sezione tessuti
Consult **TAB A - FABRICS** in fabric section

SUPPLEMENTI - SUPPLEMENT per info e automatismi for info and automatic control pag. 458



NOTE - NOTES

- Fondale in alluminio estruso FR23 in abbinamento alla variante con cavi
Guided blind with cables supplied with FR23 extruded aluminium hem bar
- Motore meccanico M40 M40 mechanical motor
- Tenda motorizzata fornita senza interruttore
Blind supplied without switch
- Con motore radio larghezza tenda MIN. 80 cm
Motor with incorporated receiver MIN width blind 80 cm

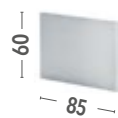


VARIANTI COPRI STAFFE MAGNETICI - OPTIONAL MAGNETIC BRACKET COVER

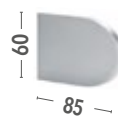
- Copri staffe magnetici in alluminio satinato o verniciato bianco RAL 9003 opaco, a supplemento.

Satin finish or matt white aluminium magnetic bracket covers, on supplement.

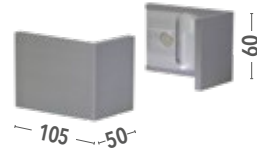
DECISO



SINUOSO



A PARETE WALL MOUNTING



A SOFFITTO CEILING MOUNTING

