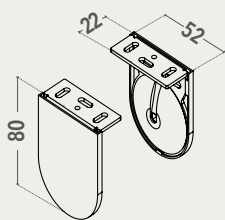
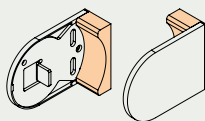


dimensioni espresse in mm
dimensions shown in mm

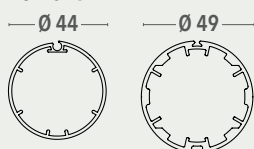
52x80



COPRIVITI
SCREW COVER PLUGS



RULLO TUBE



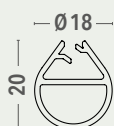
PROFILO DI PREMONTAGGIO
ALUMINIUM FRAME



F21 - SERIE 2012

FQ20

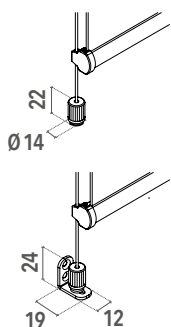
FR23



VARIANTI - OPTIONAL

- Fondale FR23 e cavo perlon Ø 1,2 mm con tenditore per fissaggio piano orizzontale, con staffe in acciaio per piano verticale, a supplemento

FR23 hem bar and Ø 1.2 mm perlon cable with cable tensioning block for window sill/floor mounting or brackets for wall mounting, on supplement



CARATTERISTICHE - CHARACTERISTICS

- Tipo di applicazione:** verticale - *Application:* vertical
- Ambiente di applicazione:** interno. Larghezza minima 80 cm
Installation: indoor. Minimum width 80 cm
- Staffe di fissaggio:** 52x80 mm in ferro verniciato con copri staffe in PVC (bianco, nero, grigio) complete di copriviti. A supplemento copri staffe magnetici in alluminio satinato o verniciato bianco RAL 9003 opaco
Brackets: 52x80 mm steel powder coated brackets with PVC covers (white, grey, black) with screw cover plugs. Supplement for satin finish or matt white aluminium magnetic bracket covers
- Rullo di avvolgimento:** Ø 44 o Ø 49 mm in alluminio estruso con ogiva
Roller tube: Ø 44 or Ø 49 mm extruded aluminum tube with slot
- Fondale:** F21 Serie 2012 o quadrato FQ20 entrambi in alluminio estruso con tappi in PVC. Fondale FR23 con la variante guida cavo perlon
Hem bar: F21 Serie 2012 or squared FQ20, extruded aluminum hem bar with PVC caps. FR23 hem bar supplied with guided blind with cable
- Manovra:** a catena combinata con comando frizionato EASY LOCK in PVC completo di calotta lato opposto con perno rientrante e molla di richiamo per agevolare il sollevamento del telo. Catena passo 6 in nylon con grani in PVC Ø 4,5 mm dotata di sgancio di sicurezza "child safety device" secondo la norma UNI EN13120:2014. Catena metallica a supplemento
Operation: combined chain operation with EASY LOCK control unit and opposite side end plug with retractable pin and compensating spring to assist roll-up. Ø 4,5 mm PVC/nylon bead chain, 6 mm pitch, with incorporated child safety device - UNI EN13120:2014. Steel chain on supplement
- Fissaggio:** a parete o a soffitto. A supplemento profilo di premontaggio in alluminio estruso verniciato
Mounting: wall or ceiling. Supplement for powder coated premounting frame

COLORI STANDARD - STANDARD COLOURS

fondali e profilo premontaggio hem bars and premounting frame colours

	bianco Ral 9010 - white Ral 9010		grigio Ral 7016 opaco - matt grey Ral 7016
	bianco Ral 9016 opaco - matt white Ral 9016		grigio micaceo liscio - smooth micaceous grey
	avorio Ral 1013 - ivory Ral 1013		nero Ral 9005 opaco - matt black Ral 9005
	marrone Ral 8017 - brown Ral 8017		argento anodizzato - silver anodised

staffe di fissaggio brackets colours

	bianco Ral 9010 - white Ral 9010		nero Ral 9005 opaco - matt black Ral 9005
	grigio Ral 9006 - grey Ral 9006		

TESSUTI ABBINABILI - SUITABLE FABRICS

- Consultare la **TABELLA A - UTILIZZO TESSUTO** nella sezione tessuti
Consult TAB A - FABRICS in fabric section

SUPPLEMENTI - SUPPLEMENT



NOTE - NOTES

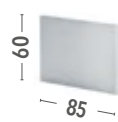
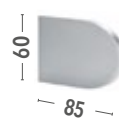
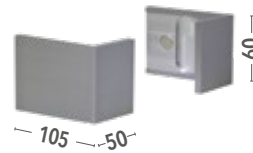
- Fondale in alluminio estruso FR23 in abbinamento alla variante con cavi Guided blind with cables supplied with FR23 extruded aluminium hem bar
- Il sistema è comprensivo di molla di richiamo che agevola il sollevamento del telo
Compensating spring to assist roll-up included



VARIANTI COPRI STAFFE MAGNETICI - OPTIONAL MAGNETIC BRACKET COVER

- Copri staffe magnetici in alluminio satinato o verniciato bianco RAL 9003 opaco, a supplemento.

Satin finish or matt white aluminium magnetic bracket covers, on supplement.

DECISO

SINUOSO

A PARETE WALL MOUNTING

A SOFFITTO CEILING MOUNTING
